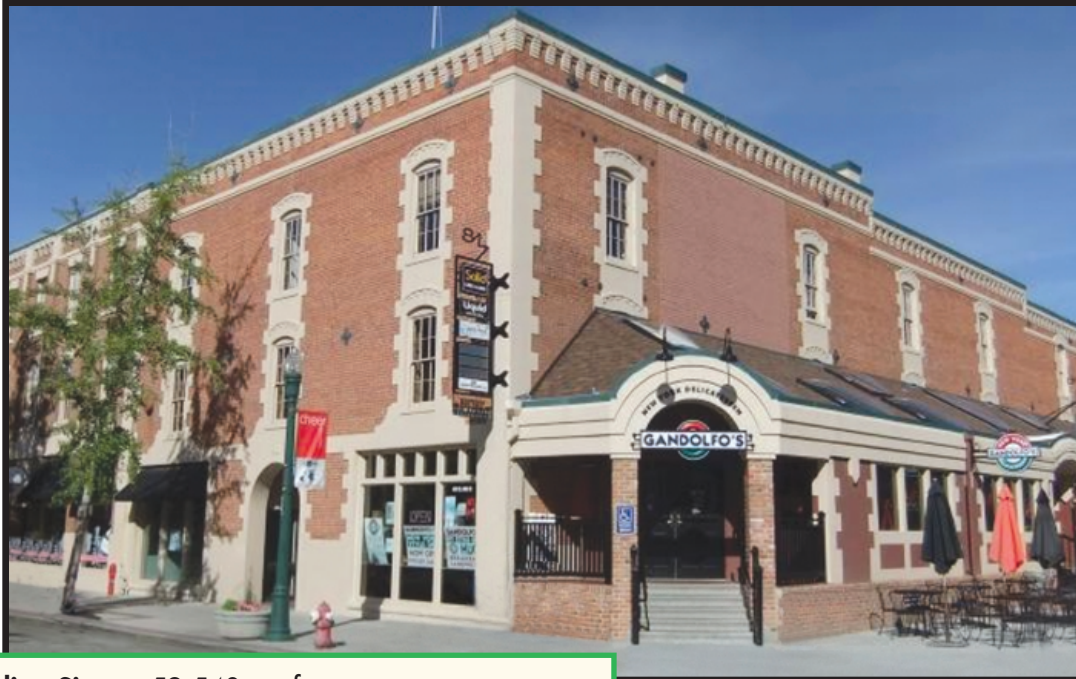


# Northrup Building

## OFFICE SPACE FOR LEASE

**8th Street Marketplace – Bodo District**

**405 S. 8th Street, Boise, Idaho**



**Building Size:** 52,540 sq. ft.  
**Office Availability:** Ranging from 288 sq. ft. to as large as 5,311 sq. ft. See Availability and Rate Sheet  
**Lease Rates:** \$9.50 - \$14.50 per sq. ft., FS See Availability and Rate Sheet  
**Lease Type:** Full Service  
**Lease Term:** Flexible, 1 to 3 years  
**T.I. Allowance:** Negotiable  
**Parking:** Public parking nearby  
**Building and Area:** Lots of character and charm with functional and creative floor plans, exposed brick, spacious common area and architectural details. Exciting restaurants and many locally owned pubs and coffee shops for meeting clients or taking a break.

**Creative and historic office space with downtown rates that can't be beat!**



701 E. STATE ST., #150  
EAGLE, ID 83616

**For more information contact:**

**Janet Benoit**  
**208-447-7344**

**E-mail: [Janetbenoit@nahasbenoit.com](mailto:Janetbenoit@nahasbenoit.com)**

**[www.nahasbenoit.com](http://www.nahasbenoit.com)**

The information contained herein has been obtained from reliable sources, but is not guaranteed.