

Generations Plaza

OFFICE FOR LEASE

ON THE PARK AT MAIN AND IDAHO

114 E. IDAHO ST., MERIDIAN

**Call About
Leasing
Incentives!**



Location: Downtown at Generations Park close to City Hall, Post Office, restaurants and services.

Leasing Information

Full service (less janitorial) which is available for a reasonable charge

Available for immediate occupancy!

- **Suite 230:** Nice reception area with storage and three large offices
913 rentable sq. ft.
\$13.00 per sq. ft.
\$995 per month

**SONNA
BUILDING
MANAGEMENT**

Gary Benoit
208-345-5477
910 Main St., Suite #358
Boise

**NAHAS
BENOIT
COMPANIES**

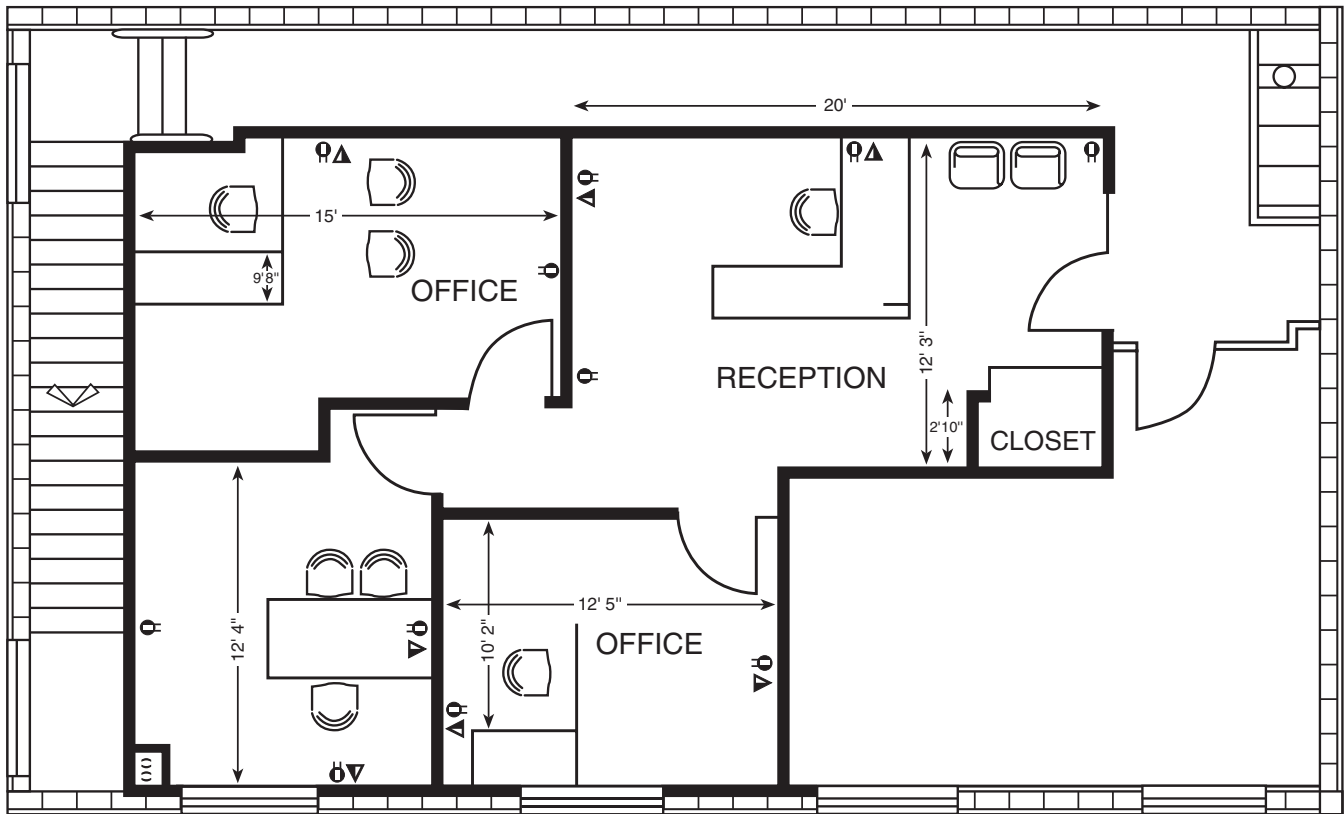
Janet Benoit
208-447-7344
E-mail: Janetbenoit@nahasbenoit.com

The information contained herein has been obtained from reliable sources, but is not guaranteed.

Generations Plaza

On the Park at Main and Idaho

“OLD TOWN MERIDIAN”



SUITE 230

For more information contact:

BENCORP.
Gary Benoit
208-345-5477



Janet Benoit
208-447-7344

E-mail: Janetbenoit@nahasbenoit.com
www.nahasbenoit.com

The information contained herein has been obtained from reliable sources, but is not guaranteed.