

# Generations Plaza

**OFFICE FOR LEASE**

**ON THE PARK AT MAIN AND IDAHO**

**114 E. IDAHO ST., MERIDIAN**



**Location:** Downtown at Generations Park close to City Hall, Post Office, restaurants and services.

## Leasing Information

Full service (less janitorial) which is available for a reasonable charge

Available for immediate occupancy!

- **Suite 230:** Nice reception area with storage and three large offices  
913 rentable sq. ft.  
\$15.75 per sq. ft.  
\$1,198 per month

**SONNA**  
**BUILDING**  
MANAGEMENT

**Gary Benoit**  
**208-345-5477**  
910 Main St., Suite #358  
Boise

**NAHAS**  
**BENOIT**  
COMPANIES

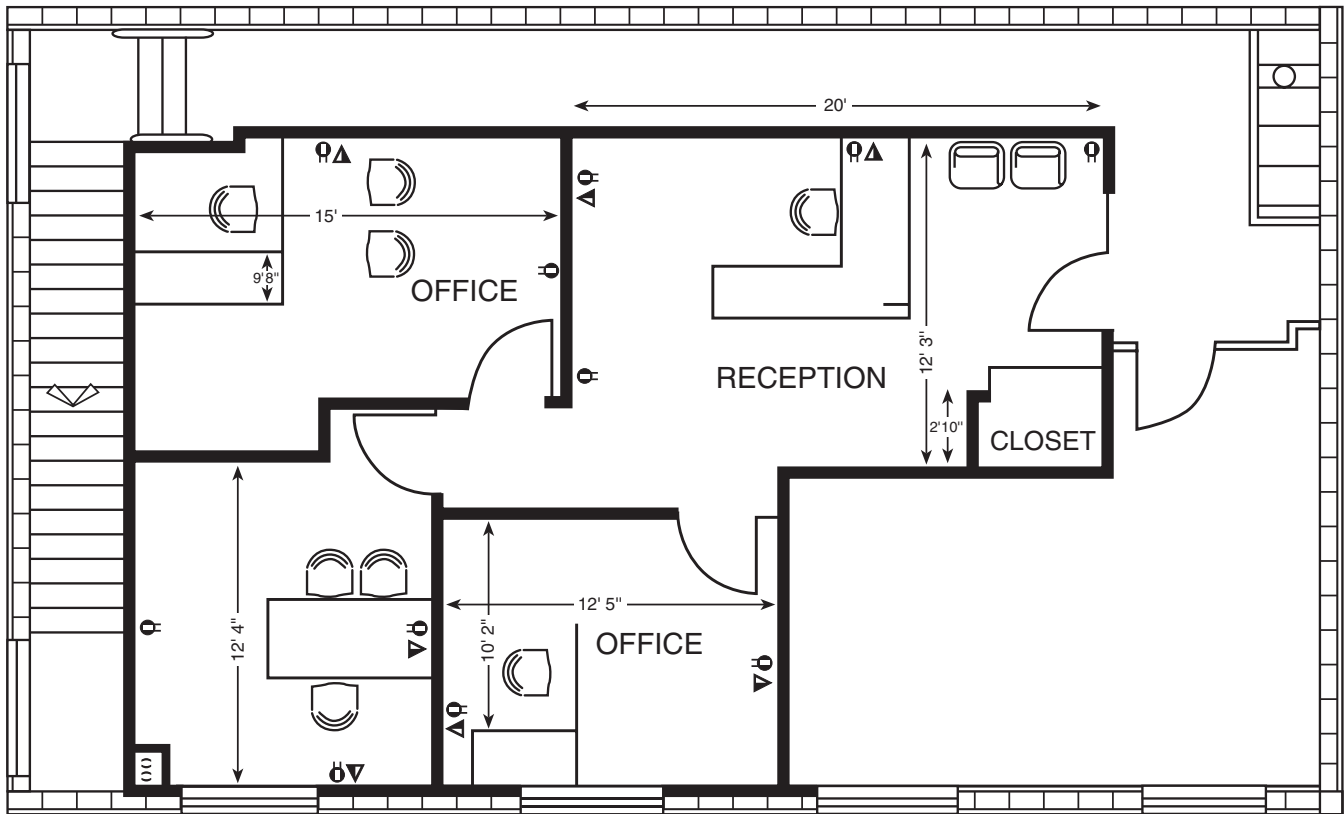
**Janet Benoit**  
**208-447-7344**  
E-mail: [Janetbenoit@nahasbenoit.com](mailto:Janetbenoit@nahasbenoit.com)

The information contained herein has been obtained from reliable sources, but is not guaranteed.

# *Generations Plaza*

On the Park at Main and Idaho

OLDTOWN MERIDIAN



## SUITE 230

*For more information contact:*

**BENCORP.**  
Gary Benoit  
208-345-5477



Janet Benoit  
208-447-7344

E-mail: [Janetbenoit@nahasbenoit.com](mailto:Janetbenoit@nahasbenoit.com)  
[www.nahasbenoit.com](http://www.nahasbenoit.com)

The information contained herein has been obtained from reliable sources, but is not guaranteed.